

WELD MOUNT SYSTEMS EUROPE BY KÖMMERLING

Product Range



H.B. Fuller



KÖMMERLING

ADHESIVES AND AUXILIARIES

AT-2010 Acrylic Adhesive

AT-2010 is a specially formulated acrylic adhesive which cures in 6 minutes and reaches working strength within 15 minutes making it ideal for production applications. It is best used with fiberglass substrates. AT-2010 has a shelf life of 6 months when stored at 20 °C or 12 months when refrigerated.

- **50 ml** | Part no. 220190
- **400 ml** | Part no. 221139



AT-8040 No Slide Multi Bonder Adhesive

AT-8040 is a specially formulated acrylic adhesive which is designed to hold all Weld Mount parts on a vertical or overhead surface with no sliding and without fixturing. This 1:1 adhesive cures in 12 minutes and reaches working strength within 45 minutes making it ideal for production applications. AT-8040 works on most metal and composite substrates. AT-8040 has a shelf life of 6 months when stored at 20 °C or 12 months when refrigerated.

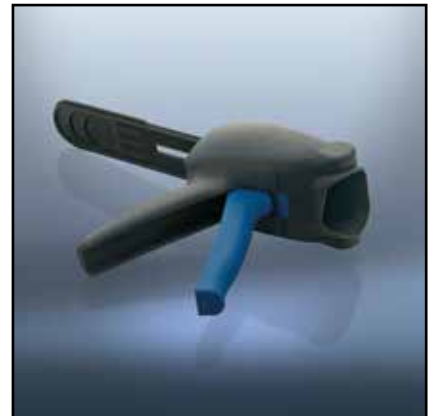
- **50 ml** | Part no. 220191
- **400 ml** | Part no. 221284



Köratool PM 207 or Köratool PP 206

Köratool PM 207 adhesive dispensing gun is designed particularly for use with Weld Mount Adhesive. It comes with a 1:1 Dual Plunger to use with our AT-2010 and AT-8040 Adhesives in 50 ml cartridges. For the 400 ml cartridges we recommend the compressed air bi-mix dispenser Köratool PP 206.

- **Köratool PM 207** | Art.-Nr. 220353
- **Köratool PP 206** | Art.-Nr. 217889



Köratool Mixing Tip 50 or Köratool Mixing Tip 400

For use with our AT-2010 and AT-8040 Adhesives in 50 ml or 400 ml cartridges.

- **Mixing Tip 50** | Part no. 220273
- **Mixing Tip 400** | Part no. 221306



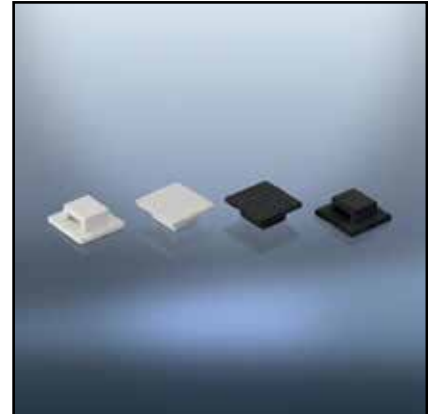
PARTS

AT-3 White or AT-3 Black Small Wire Tie Mount

Ideal for panels and light gauge wire run applications. This part is sized for a 5 mm wide wire tie. Average pull strength is about 22 kg. The square base measures 11 mm wide. Specifically designed to bond with our adhesives.

Packaging unit: 100 pieces

- **AT-3 White** | Part no. 220205
- **AT-3 Black** | Part no. 220206

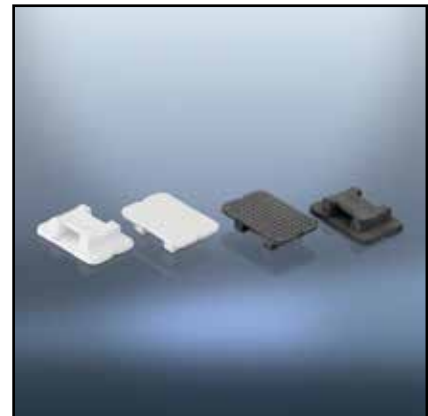


AT-5 White or AT-5 Black Wire Tie Mount

Like the AT-3, the AT-5 is designed and manufactured to bond with any of our adhesives. The substrate determines which adhesive is best. Its size allows for an up to 8.5 mm wide wire tie and has an average pull strength of 68 kg. It is approved for submerged applications. Eliminate drilling holes, blocking, tapping or welding. Eliminate water paths and warranty issues.

Packaging unit: 100 pieces

- **AT-5 White** | Part no. 220207
- **AT-5 Black** | Part no. 220209

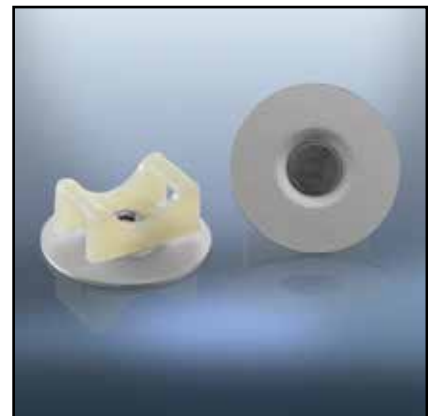


AT-7 Aluminum Base Wire Tie Mount

This tie mount has an anodized aluminum base with a nylon tie mount. The tie mount itself swivels 360 degrees making alignment with the wire harness easier. It is designed for a maximum 8.5 mm wide wire tie and has an average pull strength of 68 kg.

Packaging unit: 50 pieces

Part no. 220210



AT-9 Aluminum Wire Tie Mount

Manufactured of 5052 Marine grade aluminum with UV and salt water resistance for exterior applications. AT-9 is rated at 113 kg tensile strength.

Packaging unit: 100 pieces

Part no. 220211



AT-113 White or AT-113 Black Nylon Strap Mounts

Our strap mount is 82 mm long x 25.5 mm wide and holds up to 33 mm max strap width. It is rated for over 136 kg. This mount is paintable. Its many uses include battery and tank tie downs, mounting heavy hoses and cables or other tie down applications.

Packaging unit: 25 pieces

- **AT-113 White** | Part no. 220212
- **AT-113 Black** | Part no. 220213



V4A Stainless Steel Studs M4-Thread

Our V4A small stainless steel panel studs have a wide range of uses. Dash panels, consoles, electrical panels, and anchoring cushion clamps are some of the most popular applications. The substrate determines the adhesive. The base plate is 15.5 mm in diameter. Tensile strength is 136 kg, shear 170 kg. Please note that all of our studs can be bonded from either surface of the base plate.

Packaging unit: 100 pieces

- **PS16-M407-12mm6** | Part no. 220222
- **PS16-M407-20mm6** | Part no. 220224
- **PS16-M407-25mm6** | Part no. 220225
- **PS16-M407-35mm6** | Part no. 220227
- **PS16-M407-40mm6** | Part no. 220228
- **PS16-M407-50mm6** | Part no. 220229

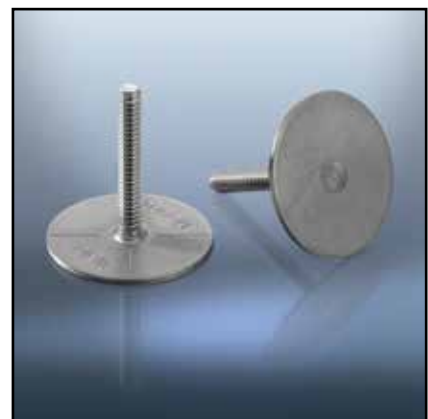


V4A Stainless Steel Studs M5-Thread

With an M5-thread, these V4A studs are ideal for mounting wire clamps and securing items which require a smaller stud diameter. The substrate determines the adhesive. This is a structural part with 225 kg of tensile strength and 295 kg in shear. Maximum torque load is 6.7 Nm. Please note that all of our studs can be bonded from either surface of the base plate.

Packaging unit: 100 pieces

- **ST32-M508-15mm6** | Part no. 220230
- **ST32-M508-20mm6** | Part no. 220231
- **ST32-M508-25mm6** | Part no. 220232
- **ST32-M508-35mm6** | Part no. 220233
- **ST32-M508-40mm6** | Part no. 220234
- **ST32-M508-50mm6** | Part no. 220235



V4A Stainless Steel Studs M6-Thread

Our V4A stainless steel studs mount to virtually any surface using our adhesives. The substrate determines the proper adhesive. This is a structural part with 225 kg of tensile strength and 295 kg in shear. Torque load is 10 Nm. Note that these studs can be bonded on the bottom or surface side of the base. Used for hanging panels, insulation, battery chargers, cabinets, through deck mounts, upholstery bolsters and many other scenarios.

Packaging unit: 100 pieces

- **ST32-M610-15mm6** | Part no. 220236
- **ST32-M610-20mm6** | Part no. 220237
- **ST32-M610-25mm6** | Part no. 220238
- **ST32-M610-35mm6** | Part no. 220239
- **ST32-M610-40mm6** | Part no. 220240
- **ST32-M610-50mm6** | Part no. 220241



V4A Stainless Steel Heavy Load Studs M8/M10-Thread

Our M8/M10 studs are designed for heavy load applications such as mounting filters, panels and signs. The studs are inertial (friction) welded to the baseplate creating a very strong part. The base plate is 5 cm in diameter. These studs are manufactured of V4A stainless steel. Tensile strength is 544 kg and shear strength is 680 kg. The substrate and application determine the according adhesive.

Packaging unit: 25 pieces

- **HS50-M8125-30mm6** | Part no. 220242
- **HS50-M8125-40mm6** | Part no. 220243
- **HS50-M1015-30mm6** | Part no. 220244
- **HS50-M1015-40mm6** | Part no. 220245

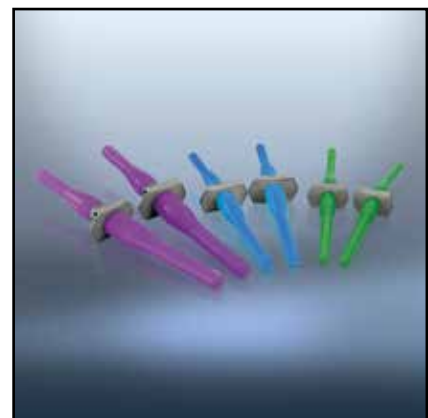


V4A Stainless Steel Floating Nut Plates

Our floating nut plate is designed for thru hole and blind mounting applications. The rubber fixture holds the part in place while it is bonded with acrylic adhesive. The fixture keeps the threads clean during installation. Remove the rubber fixture when you are ready to assemble. The threaded nut floats allow for accurate bolt alignment. Nut plates eliminate tapping saving significant labor costs.

Packaging unit: 100 pieces

- **FN-M4-6** | Part no. 220214
- **FN-M5-6** | Part no. 220215
- **FN-M6-6** | Part no. 220216



V4A Blind Threaded Standoff

Our stainless steel female threaded standoff mounts to virtually any surface. These standoffs are 20 mm tall. Like our studs, these parts can be bonded to either the bottom or surface side of the base. Use for thorough deck mounting of hardware or where a fixed female thread is needed. Maximum torque load is 10 Nm.

Packaging unit: 100 pieces

- **SOB32-M508-20mm6** | Part no. 220246
- **SOB32-M610-20mm6** | Part no. 220247
- **SOB32-M8125-20mm6** | Part no. 220248



Hose & Cable Clamps

Our Weld Mount clamps are available as single units (double units on request). Each is hinged and designed to be mounted using our M6-thread. The clamps are manufactured of black polypropylene and are temperature rated for -30 °C to +90 °C continuous service.

Packaging unit: 25 pieces

- **SCH-500** | Part no. 220217
(Stud required: ST32-M508-35mm6)
- **SCH-750** | Part no. 220218
(Stud required: ST32-M508-50mm6)



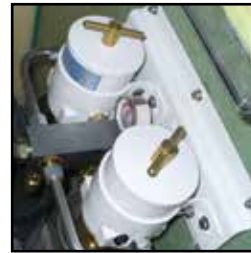
All limits for tensile and shear strength have been evaluated under strict testing conditions and serve for reference purposes only. Please consult your distributor for questions regarding individual use cases.

THE WELD MOUNT SYSTEM - TYPICAL APPLICATIONS

- + Cushion Clamps & Stud
- + Metal Bonding
- + Wet Fiberglass
- + Accessory Mounting

- + Blower / Vent Attachment
- + Battery Cables
- + Crane Surface Mounting
- + Overhead

- + Pumps / Panels Mounting
- + Emergency Vehicle Mounts
- + Mounting to Powder Coat
- + Hydraulic Lines on Standoffs



WELD MOUNT SYSTEMS EUROPE BY KÖMMERLING

Contact us

KÖMMERLING CHEMISCHE FABRIK GMBH
Phone +49 6331 56-2000
Fax +49 6331 56-1999
E-mail weldmount@koe-chemie.de
www.weldmountsystems.eu





H.B. FULLER | KÖMMERLING WORLDWIDE

Germany

KÖMMERLING CHEMISCHE FABRIK GMBH
Zweibrücker Straße 200
66954 Pirmasens

Phone +49 6331 56-2000
Fax +49 6331 56-1999
E-mail info@koe-chemie.de
www.koe-chemie.de

France

KOEMMERLING CHIMIE SARL
7, Rue des Corroyeurs
67200 Strasbourg

Phone +33 388 28-8359
Fax +33 388 28-2223
E-mail info.france@koemmerling.com
www.koe-chemie.com

Russia

KÖMMERLING CHEMISCHE FABRIK GMBH
Kozjubinskogo Geb. 4, Bau 3, Nr. 331
121351 Moskau

Phone +7 495 9842174
E-mail info@koe-chemie.de
www.koe-chemie.com

United Kingdom

KÖMMERLING UK LTD.
27 Riverside Way
UB8 2YF Uxbridge Middlesex

Phone +44 1895 465600
Fax +44 1895 465617
E-mail info@kommerlinguk.com
www.kommerlinguk.com

217 Walton Summit Road
Bamber Bridge
PR5 8AQ Preston Lancashire

Phone +44 1772 322888
Fax +44 1772 315853
E-mail sales@kommerlinguk.com
www.kommerlinguk.com

USA

H.B. FULLER
1200 Willow Lake Blvd
St Paul, MN 55110

Phone +1 651 236-5900
www.hbfuller.com

2001 West Washington Street
South Bend, IN 46628

Phone +1 574 246-5000
Fax +1 574 246-5425

China

KÖMMERLING CHEMISCHE FABRIK GMBH
1007 Air China Plaza, 36 Xiaoyun Road,
Chaoyang District,
Beijing 100027, P.R.China

Phone +86 10 6461 9988
Fax +86 10 6461 9900
E-mail info@koe-chemie.cn
www.koe-chemie.cn